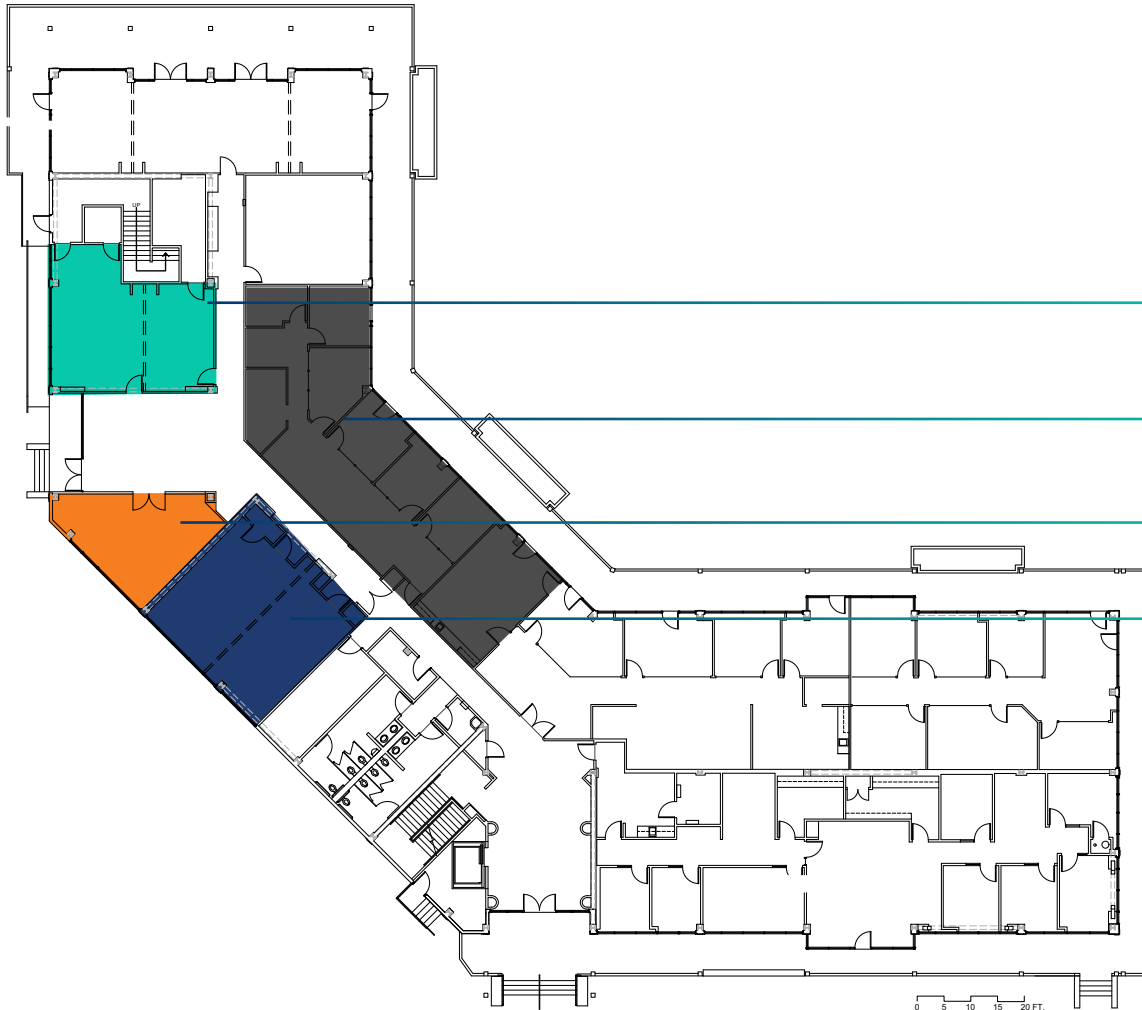


# 755 BAYWOOD DRIVE

## FIRST FLOOR



### FITNESS ROOM (PLANNED) COMMON CONFERENCE ROOM

SUITE 194: ±865 SF

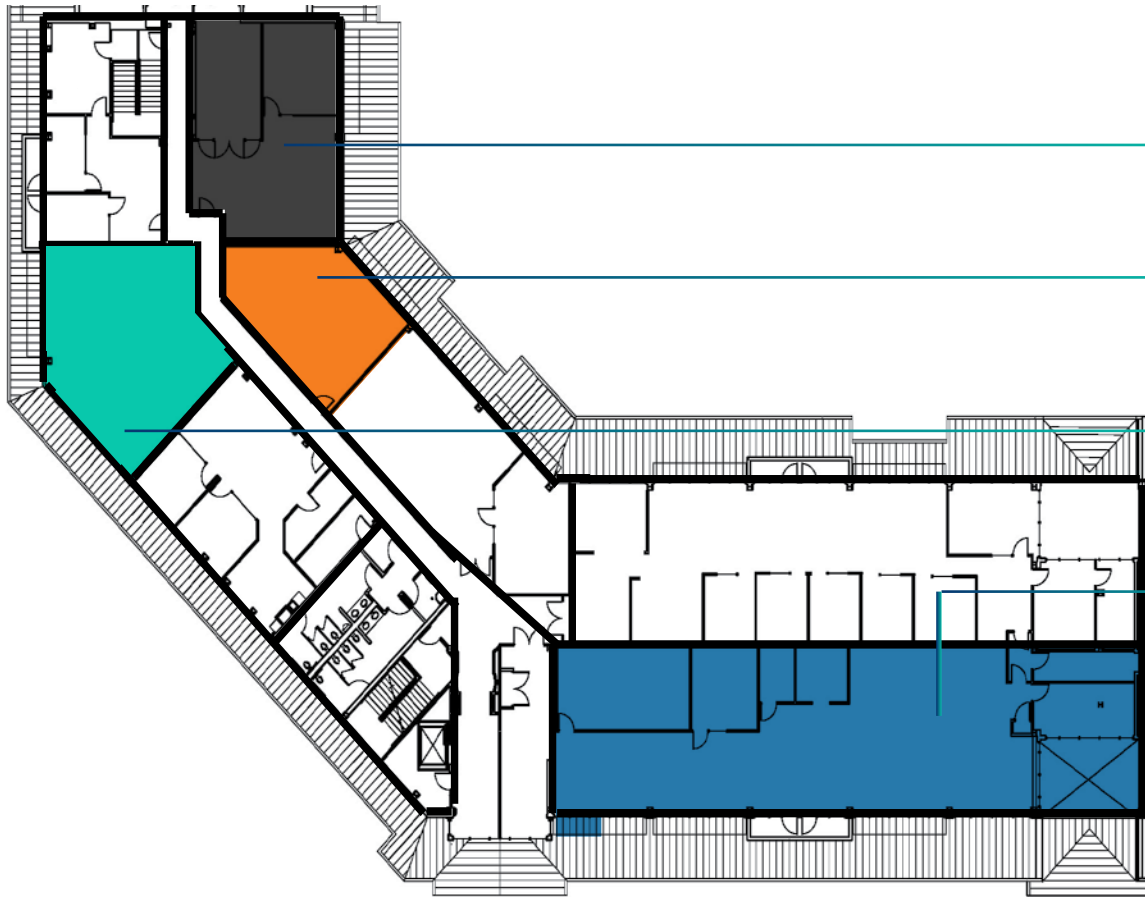
SUITE 185: ±1,682 SF

COMMON CONFERENCE ROOM

(PLANNED) FITNESS ROOM

# 755 BAYWOOD DRIVE

## THIRD FLOOR



### **RENT INCENTIVE - Suite 390 (3,789 SF)**

**PAY ON ONLY 2,000 SF  
FOR FIRST 3 YEARS OF 5-YEAR LEASE**

CONTACT JLL FOR DETAILS

SUITE 360: ±1,427 SF

SUITE 365: ±798 SF

\*Shell Space\*

SUITE 340: ±1,293 SF

\*Shell Space\*

SUITE 390: ±3,789 SF